

## Notes for Panna Frost Flowers

This project is my machine knitting interpretation of the Panna Frost Flowers Lace Shawl pattern published by Foldi-Knits. <http://foldi-knit.blogspot.com/2011/10/frost-flower-lace-shawl-free-machine.html> Please refer to the Foldi website for access to that pattern. I advise printing that chart out for reference and comparison. I also recommend searching the internet for images of Frost Flowers knitted up so that you can get an idea of what your knitting should look like. I have included a photo of my own swatch, but have not included photos of others' work.

The 6 charts have been tested in order and worked. They are suitable for loading into Brother 930, 940 or 950i using img2track. They are not designed for punchcards. I cannot say whether they can be used with other machines or software.

The first 2 charts are the smallest repeat, 34 stitches. Charts 3-6 are full width, 102 stitches. In order to increase the width of the overall piece, be sure to use Selector 1 and center the motifs at 1L-1R.

There are a few spots where the "yarn over" stitches are quite loose, and can get hooked on a gate peg easily. Be very vigilant for 'hangups' on a gate peg. If caught early, the stitch can practicably be simply placed on a needle and knitted in.

Be sure to repeat the charts the number of times specified.

The charts display reversed since they knit "backwards" when loaded into the knitting machine. The "right" side is away from the knitter on the machine. If this were not so, the transfers would not occur in the correct direction with the lace carriage on the left. All charts are to be knitted with the lace carriage beginning and ending on the left side. When passing the lace carriage from right to left and no needles are selected, this is the indication to knit one row with the K-Carriage.

There is **only one knitted row** between each lace segment. This means that the yarn will end up on the same side as the lace carriage every other time. When *knitting* a row from right to left, follow this procedure: Knit the row, right to left. Press **both Part Buttons** and remove the yarn from the feeder. Pass the K-Carriage back to the right and clip the yarn under the left side of the machine. Using the lace carriage now, make the next section of transfers. When they are done, park the lace carriage on the left. Pass the K-Carriage from right to left without yarn (Part Buttons are still depressed.) When the carriage is to the left of the knitting, place the yarn back into the feeder and close it. Release the Part Buttons and knit from left to right. Proceed with the next group of transfers with the lace carriage.

Note that the second lace segment in the first chart **has no transfers**. This means that there ends up being 2 knitted rows. This is not an error.

In chart 2 there are columns of stitches that are meant to be purled. These can simply be left alone on the main bed with a good result. Is it possible to put these stitches on the ribber? I don't know. It would require that the ribber be lowered while transferring stitches with the lace carriage, and then brought back up to knit the row with both carriages. Also, after row 144 and the following knitted row, transfer ribber stitches back to main bed and next pairs of main bed stitches to ribber. Alternatively, these stitches could be reformed by hand. In my sample I simply ignored these stitches and left them to knit on the main bed. I've now created a second chart, chart 2(Purl), which will select the groups of 2 stitches that need to be hand transferred. This will occur on the final pass of the lace carriage, so you must be aware that the final row with the lace carriage will NOT have no needles selected, as

would be normal when completing a lace section. You can either push these needles back to LWP, to reform the stitches later (ie after several rows, this can save time), or do the reforming on each row.

Chart 1

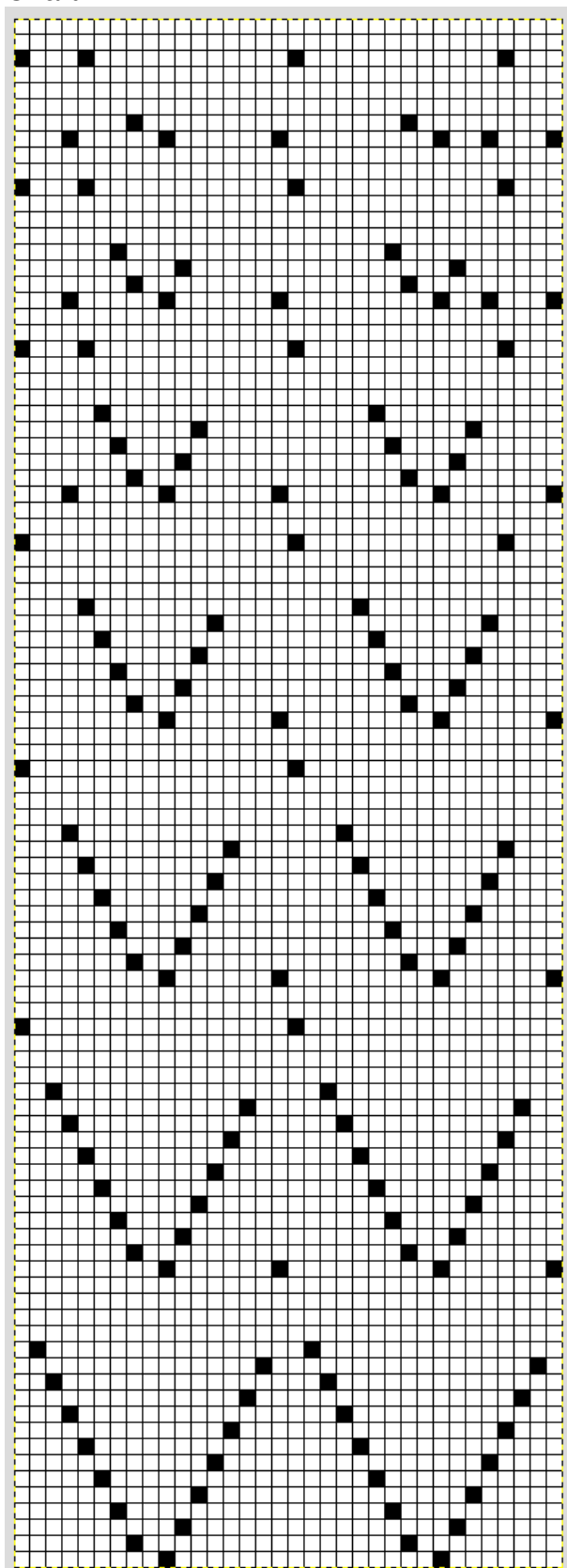


Chart 2

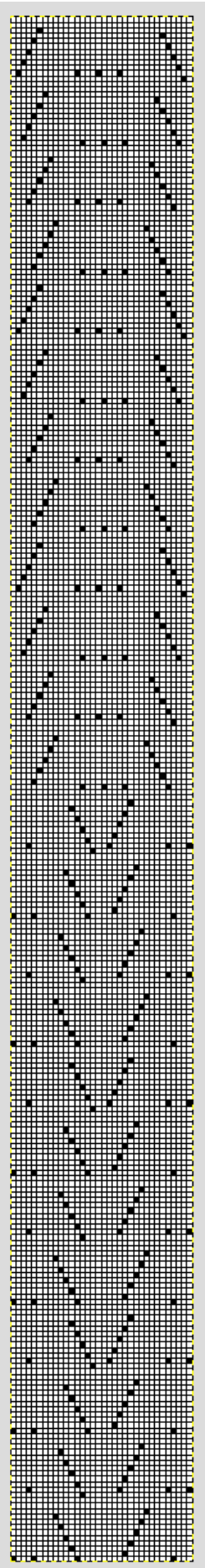


Chart 3

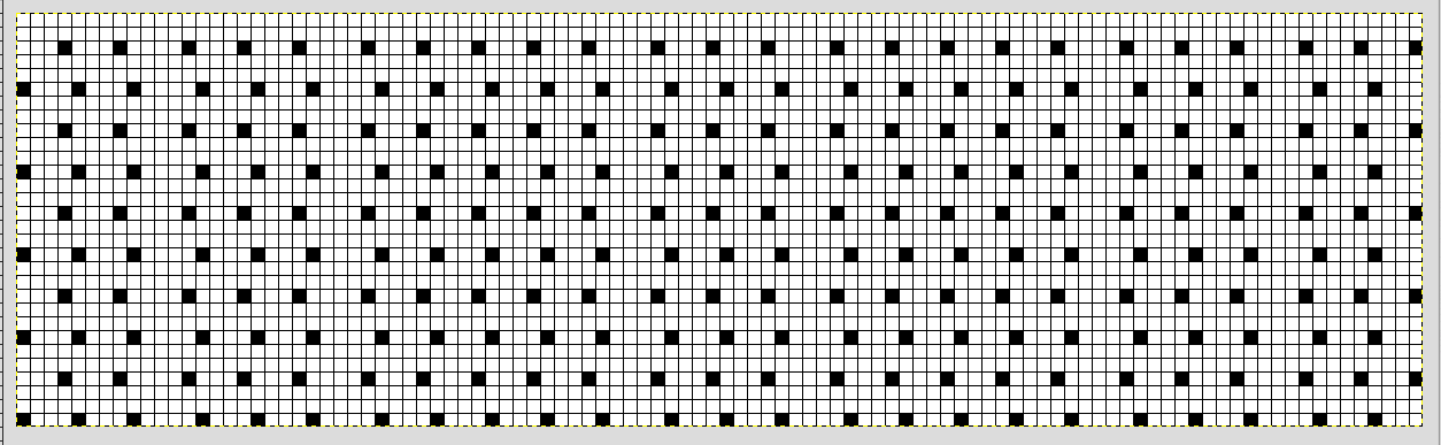


Chart 4

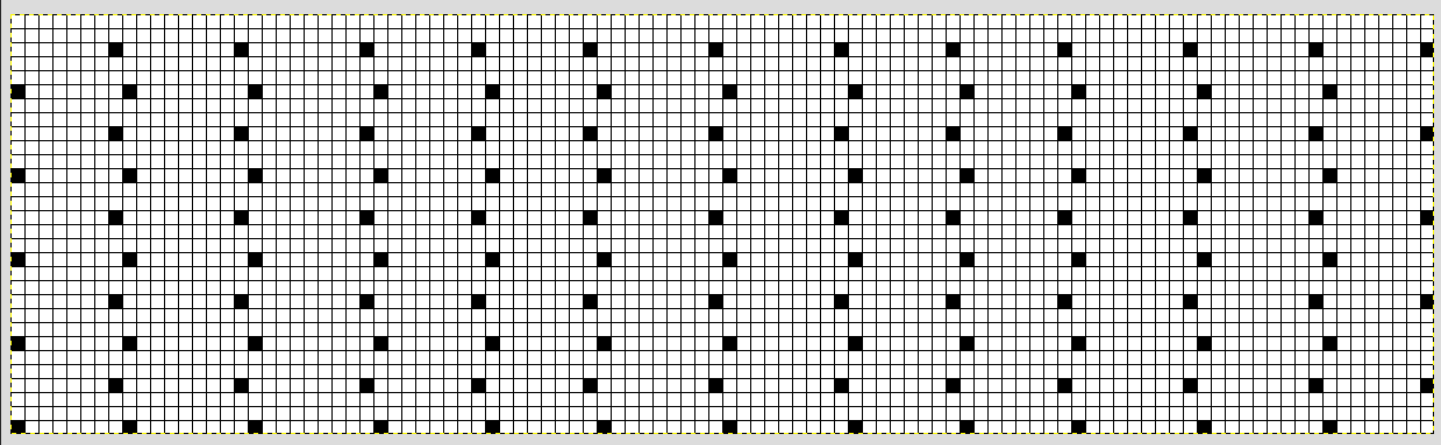


Chart 5

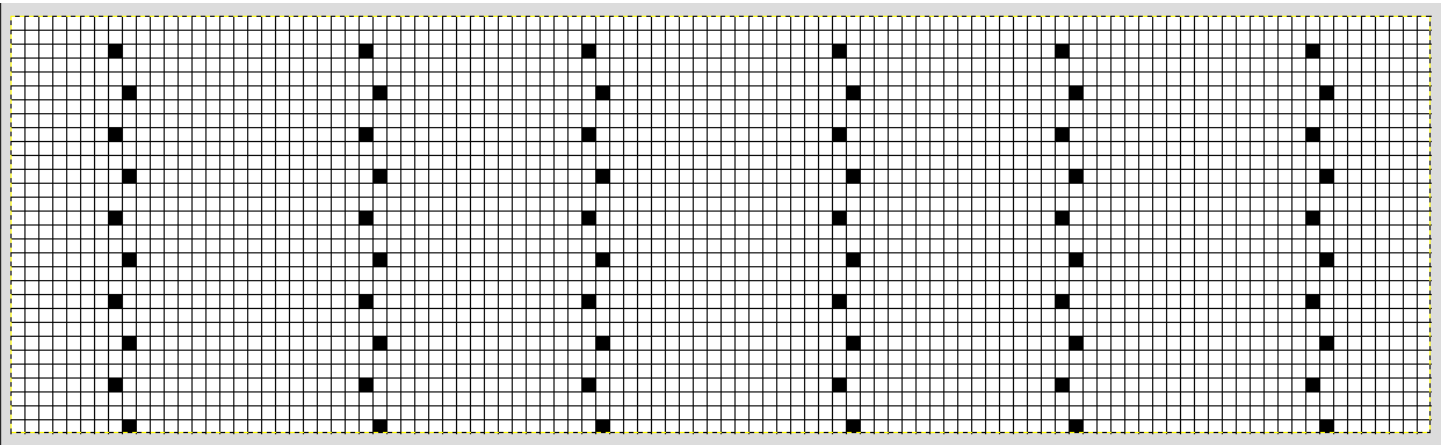


Chart 6

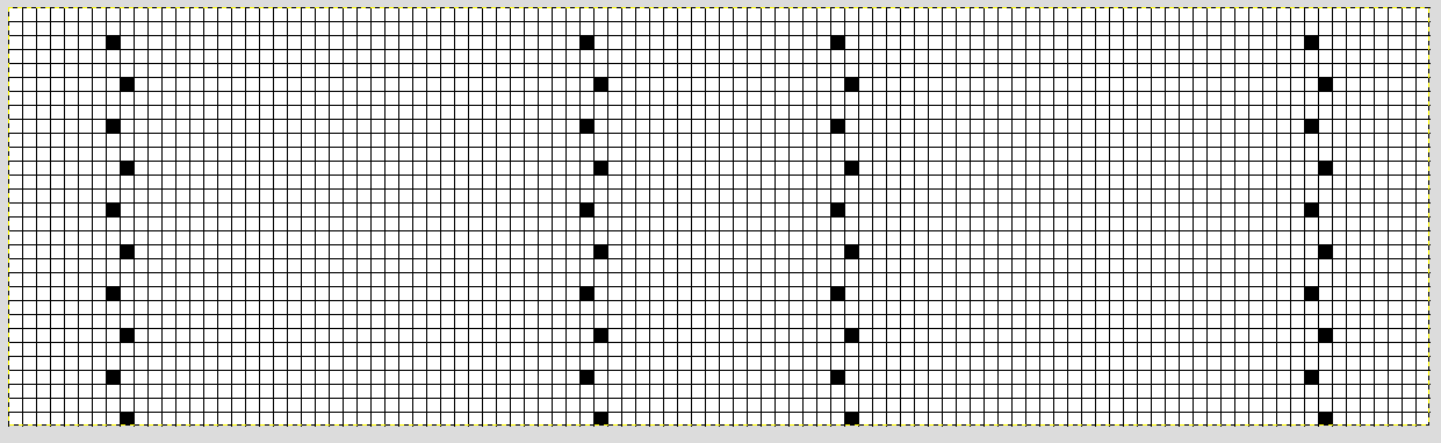


Chart 2(Purl)

